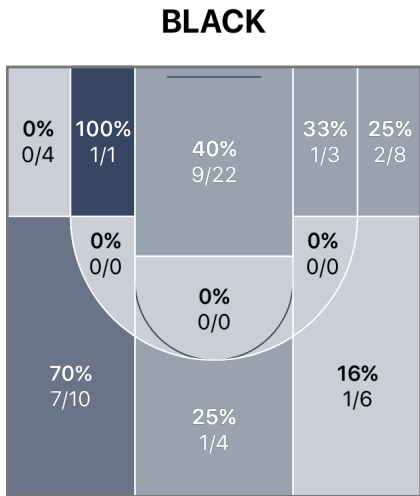
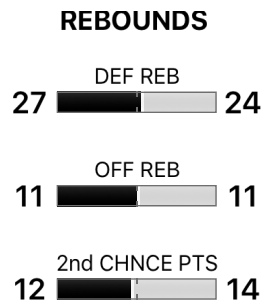
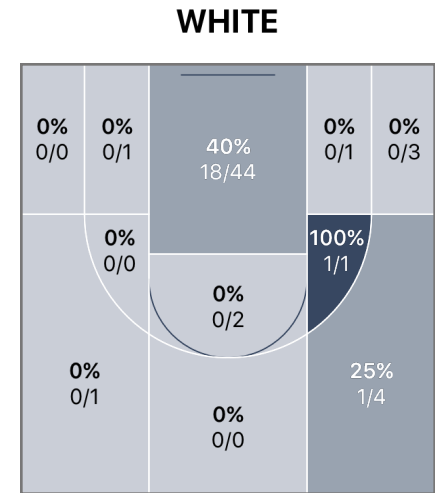


**BLACK 61** **Game Over** **51** **WHITE**

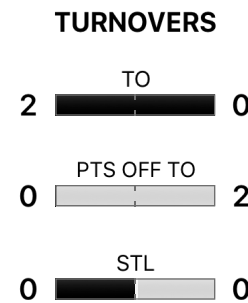


	1	2	3	4
BLACK	18	18	15	10
WHITE	15	10	8	18



**POINTS**

BLACK	WHITE
38% FG%	34%
34% 3PT FG%	11%
67% FT%	77%
18 PTS IN PAINT	36



## Team Totals

	FGM-A	3PM-A	FTM-A	PIP	OREB	DREB	REB	2CP	AST	STL	POT	BLK	TO	PF	PTS
ARCHBISHOP W...	22-58	11-32	6-9	18	11	27	38	12	0	0	0	0	2	15	61
ST. STEPHENS...	20-58	1-9	10-13	36	11	24	35	14	0	0	2	0	0	11	51

**FGM-A** - Field Goal Makes/Attempts      **OREB** - Offensive Rebounds      **AST** - Assists      **TO** - Turnovers  
**3PM-A** - 3 Point Makes/Attempts      **DREB** - Defensive Rebounds      **STL** - Steals      **PF** - Personal & Technical Fouls  
**FTM-A** - Free Throw Makes/Attempts      **REB** - Rebounds      **POT** - Points off Turnovers      **PTS** - Total Points  
**PIP** - Points in the Paint      **2CP** - 2nd Chance Points      **BLK** - Blocks

### Archbishop Wood (PA) Stats

PLAYERS	FGM-A	3PM-A	FTM-A	PIP	OREB	DREB	REB	2CP	AST	STL	POT	BLK	TO	PF	PTS
#20, M Cerruti	6-11	5-8	2-2	2	0	0	0	9	0	0	0	0	0	1	19
#11, A Funk	7-8	3-3	0-1	6	0	0	0	0	0	0	0	0	0	3	17
#1, C Gillespie	4-12	2-8	0-0	2	0	0	0	0	0	0	0	0	0	3	10
#5, K Otto	2-5	0-3	2-2	4	0	0	0	2	0	0	0	0	0	1	6
#21, K Wallace	2-4	0-0	0-0	4	0	0	0	0	0	0	0	0	1	3	4
#10, T Pickron	1-11	1-7	0-0	0	0	0	0	0	0	0	0	0	0	1	3
#15, S Pinkney	0-1	0-0	2-4	0	0	0	0	1	0	0	0	0	1	3	2
#0, S Thompson	0-0	0-0	0-0	0	0	0	0	0	0	0	0	0	0	0	0
#3, Z Harrison	0-0	0-0	0-0	0	0	0	0	0	0	0	0	0	0	0	0
#12, K McNamee	0-0	0-0	0-0	0	0	0	0	0	0	0	0	0	0	0	0
#14, C Garland	0-0	0-0	0-0	0	0	0	0	0	0	0	0	0	0	0	0
#30, J Phillips	0-2	0-0	0-0	0	0	0	0	0	0	0	0	0	0	0	0
Unassigned/Team	0-4	0-3	0-0	0	11	27	38	0	0	0	0	0	0	0	0
<b>Total</b>	<b>22-58</b>	<b>11-32</b>	<b>6-9</b>	<b>18</b>	<b>11</b>	<b>27</b>	<b>38</b>	<b>12</b>	<b>0</b>	<b>0</b>	<b>0</b>	<b>0</b>	<b>2</b>	<b>15</b>	<b>61</b>

**FLAGRANT FOULS**

BLACK TEAM None

**TECHNICAL FOULS**

BLACK TEAM None

### St. Stephens & St. Agnes School (VA) Stats

PLAYERS	FGM-A	3PM-A	FTM-A	PIP	OREB	DREB	REB	2CP	AST	STL	POT	BLK	TO	PF	PTS
#32, C Thompson	6-12	0-0	3-4	12	0	0	0	4	0	0	0	0	0	2	15
#5, J White	4-9	1-3	1-1	6	0	0	0	3	0	0	0	0	0	1	10
#2, D Slay II	4-15	0-5	1-1	6	0	0	0	2	0	0	2	0	0	3	9
#4, D Bailey	3-10	0-0	2-3	6	0	0	0	1	0	0	0	0	0	3	8
#20, J Barnes	1-3	0-0	2-2	2	0	0	0	4	0	0	0	0	0	0	4
#10, L Delgado	1-1	0-0	0-0	2	0	0	0	0	0	0	0	0	0	0	2
#22, M McEnene...	1-3	0-0	0-0	2	0	0	0	0	0	0	0	0	0	1	2
#33, X Lipscomb	0-1	0-0	1-2	0	0	0	0	0	0	0	0	0	0	1	1
#1, C DePollar	0-0	0-0	0-0	0	0	0	0	0	0	0	0	0	0	0	0
#3, E Reed	0-2	0-0	0-0	0	0	0	0	0	0	0	0	0	0	0	0
#11, O Weisenfluh	0-0	0-0	0-0	0	0	0	0	0	0	0	0	0	0	0	0
#13, M Lewis	0-0	0-0	0-0	0	0	0	0	0	0	0	0	0	0	0	0
Unassigned/Team	0-2	0-1	0-0	0	11	24	35	0	0	0	0	0	0	0	0
<b>Total</b>	<b>20-58</b>	<b>1-9</b>	<b>10-13</b>	<b>36</b>	<b>11</b>	<b>24</b>	<b>35</b>	<b>14</b>	<b>0</b>	<b>0</b>	<b>2</b>	<b>0</b>	<b>0</b>	<b>11</b>	<b>51</b>

**FLAGRANT FOULS**

WHITE TEAM None

**TECHNICAL FOULS**

WHITE TEAM None