

# St. Raymond's (NY) 68 - 54 Coolidge (DC)

Home

Tournament

Saturday, December 12, 2015

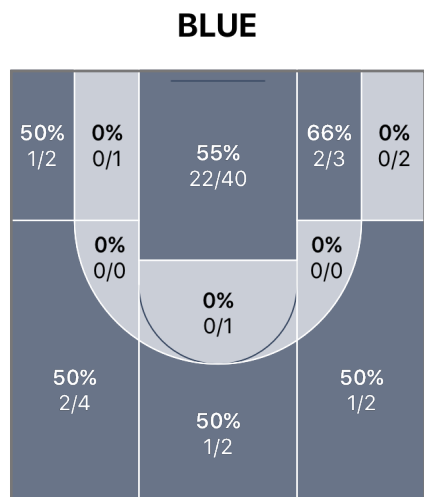
BLUE

68

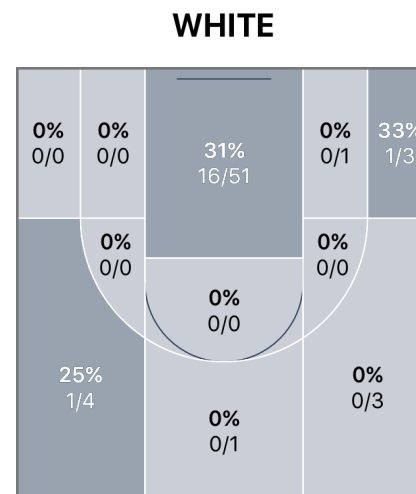
Game Over

54

WHITE



	1	2	3	4
BLUE	19	17	15	17
WHITE	11	12	12	19



**REBOUNDS**



**POINTS**

BLUE		WHITE
50%	FG%	29%
38%	3PT FG%	18%
63%	FT%	64%
44	PTS IN PAINT	32

**TURNOVERS**



**Team Totals**

	FGM-A	3PM-A	FTM-A	PIP	OREB	DREB	REB	2CP	AST	STL	POT	BLK	TO	PF	PTS
ST. RAYMOND'S...	29-58	5-13	5-8	44	14	25	39	17	0	0	2	0	5	23	68
COOLIDGE (DC)	18-63	2-11	16-25	32	21	16	37	17	0	0	3	0	2	13	54

FGM-A - Field Goal Makes/Attempts  
 3PM-A - 3 Point Makes/Attempts  
 FTM-A - Free Throw Makes/Attempts  
 PIP - Points in the Paint

OREB - Offensive Rebounds  
 DREB - Defensive Rebounds  
 REB - Rebounds  
 2CP - 2nd Chance Points

AST - Assists  
 STL - Steals  
 POT - Points off Turnovers  
 BLK - Blocks

TO - Turnovers  
 PF - Personal & Technical Fouls  
 PTS - Total Points

# St. Raymond's (NY) 68 - 54 Coolidge (DC)

 Home

 Tournament

 Saturday, December 12, 2015

## St. Raymond's (NY) Stats

PLAYERS	FGM-A	3PM-A	FTM-A	PIP	OREB	DREB	REB	2CP	AST	STL	POT	BLK	TO	PF	PTS ▾
#11, I Washington	7-15	0-3	0-1	14	0	0	0	0	0	0	2	0	2	4	<b>14</b>
#14, N Rivera	6-7	1-1	1-1	8	0	0	0	4	0	0	0	0	0	3	<b>14</b>
#21, C Nmzei	4-4	0-0	0-0	8	0	0	0	4	0	0	0	0	0	1	<b>8</b>
#35, S Wilson	2-4	2-2	0-2	0	0	0	0	0	0	0	0	0	1	4	<b>6</b>
#4, D Watson	3-9	0-1	0-0	6	0	0	0	4	0	0	0	0	0	2	<b>6</b>
#22, C Nmzfi	2-3	0-0	2-2	2	0	0	0	2	0	0	0	0	2	4	<b>6</b>
#20, O Silverio	2-4	1-2	0-0	2	0	0	0	0	0	0	0	0	0	0	<b>5</b>
#5, T Trice	1-2	0-0	2-2	2	0	0	0	0	0	0	0	0	0	0	<b>4</b>
#23, T Arocho	0-0	0-0	0-0	0	0	0	0	0	0	0	0	0	0	0	<b>0</b>
#1, B Adams	0-4	0-2	0-0	0	0	0	0	0	0	0	0	0	0	1	<b>0</b>
#33, L Geffard	0-3	0-0	0-0	0	0	0	0	0	0	0	0	0	0	4	<b>0</b>
#55, A Traore	0-0	0-0	0-0	0	0	0	0	0	0	0	0	0	0	0	<b>0</b>
Unassigned/Team	2-3	1-2	0-0	2	14	25	39	3	0	0	0	0	0	0	<b>5</b>
<b>Total</b>	<b>29-58</b>	<b>5-13</b>	<b>5-8</b>	<b>44</b>	<b>14</b>	<b>25</b>	<b>39</b>	<b>17</b>	<b>0</b>	<b>0</b>	<b>2</b>	<b>0</b>	<b>5</b>	<b>23</b>	<b>68</b>

### FLAGRANT FOULS

BLUE TEAM None

### TECHNICAL FOULS

BLUE TEAM None

# St. Raymond's (NY) 68 - 54 Coolidge (DC)

 Home

 Tournament

 Saturday, December 12, 2015

## Coolidge (DC) Stats

PLAYERS	FGM-A	3PM-A	FTM-A	PIP	OREB	DREB	REB	2CP	AST	STL	POT	BLK	TO	PF	PTS
#22, B Hill	4-12	1-4	4-6	6	0	0	0	5	0	0	0	0	0	0	13
#3, K Jeter	3-8	1-3	3-4	4	0	0	0	4	0	0	1	0	0	1	10
#4, W Vedder	4-8	0-0	1-2	8	0	0	0	3	0	0	0	0	1	1	9
#2, L Lee-Kane	1-3	0-0	5-6	2	0	0	0	3	0	0	0	0	1	3	7
#1, J Hampton	3-7	0-1	0-2	6	0	0	0	2	0	0	0	0	0	1	6
#5, L Anderson	2-14	0-0	1-3	4	0	0	0	0	0	0	2	0	0	1	5
#10, T Rozier	1-5	0-1	0-0	2	0	0	0	0	0	0	0	0	0	3	2
#0, S Dotson	0-1	0-0	2-2	0	0	0	0	0	0	0	0	0	0	1	2
#11, D Herndon	0-0	0-0	0-0	0	0	0	0	0	0	0	0	0	0	0	0
#14, R Harrod	0-2	0-1	0-0	0	0	0	0	0	0	0	0	0	0	1	0
#15, J Bolden	0-0	0-0	0-0	0	0	0	0	0	0	0	0	0	0	1	0
#20, T Reeves	0-0	0-0	0-0	0	0	0	0	0	0	0	0	0	0	0	0
#23, J Williams	0-0	0-0	0-0	0	0	0	0	0	0	0	0	0	0	0	0
#35, R Deans	0-0	0-0	0-0	0	0	0	0	0	0	0	0	0	0	0	0
Unassigned/Team	0-3	0-1	0-0	0	21	16	37	0	0	0	0	0	0	0	0
<b>Total</b>	<b>18-63</b>	<b>2-11</b>	<b>16-25</b>	<b>32</b>	<b>21</b>	<b>16</b>	<b>37</b>	<b>17</b>	<b>0</b>	<b>0</b>	<b>3</b>	<b>0</b>	<b>2</b>	<b>13</b>	<b>54</b>

### FLAGRANT FOULS

WHITE TEAM None

### TECHNICAL FOULS

WHITE TEAM None